

CANDIDATE
NAME

| |
|--|
| |
|--|

CENTRE
NUMBER

| | | | | |
|--|--|--|--|--|
| | | | | |
|--|--|--|--|--|

CANDIDATE
NUMBER

| | | | |
|--|--|--|--|
| | | | |
|--|--|--|--|



BIOLOGY

Paper 4 Theory (Extended)

0610/41

May/June 2017

1 hour 15 minutes

Candidates answer on the Question Paper.

No Additional Materials are required.

READ THESE INSTRUCTIONS FIRST

Write your Centre number, candidate number and name on all the work you hand in.

Write in dark blue or black pen.

You may use an HB pencil for any diagrams or graphs.

Do not use staples, paper clips, glue or correction fluid.

DO NOT WRITE IN ANY BARCODES.

Answer **all** questions.

Electronic calculators may be used.

You may lose marks if you do not show your working or if you do not use appropriate units.

At the end of the examination, fasten all your work securely together.

The number of marks is given in brackets [] at the end of each question or part question.

The syllabus is approved for use in England, Wales and Northern Ireland as a Cambridge International Level 1/Level 2 Certificate.

This document consists of **17** printed pages and **3** blank pages.

1 Fat is a necessary component of the human diet.

(a) State **three** ways in which the human body uses fat.

- 1.....
- 2.....
- 3.....

[3]

The arrows in Fig. 1.1 show the pathway of fat in part of the alimentary canal.

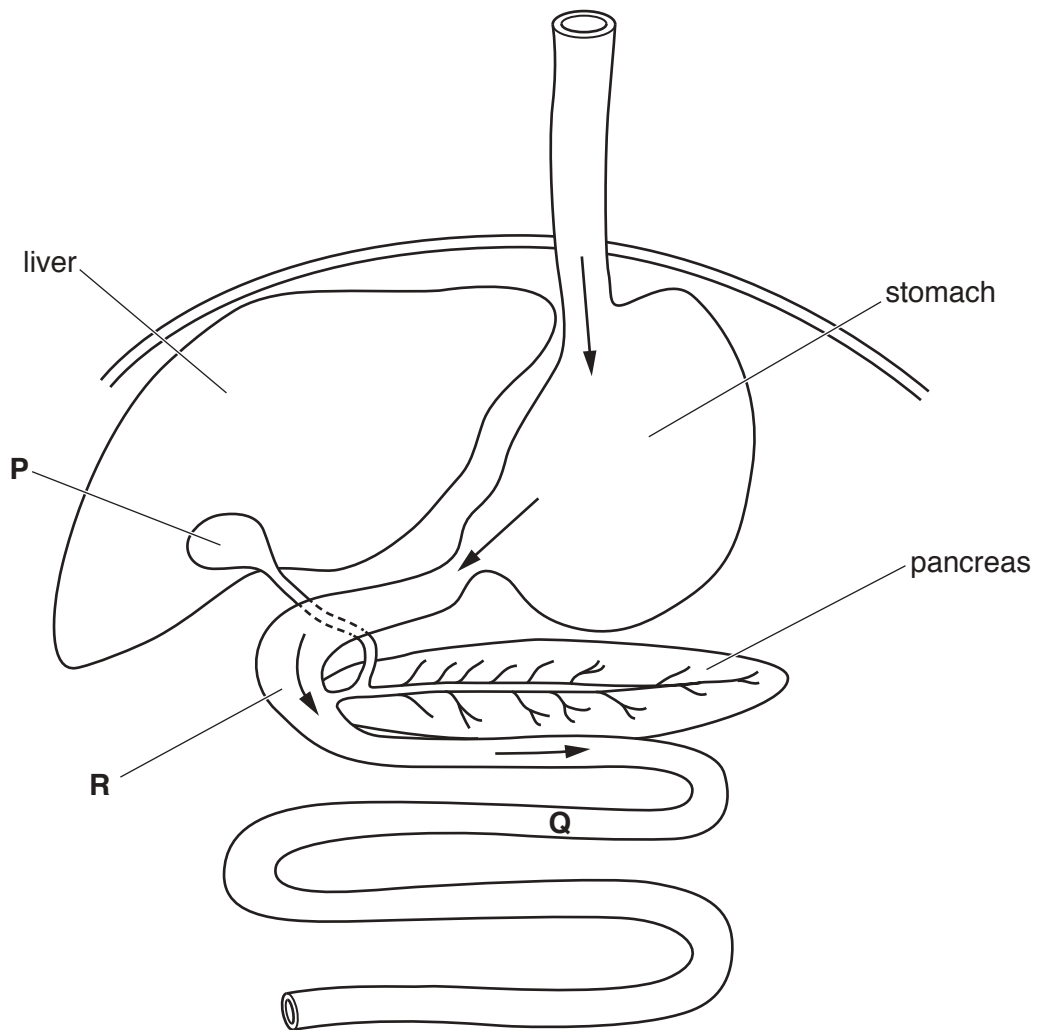


Fig. 1.1

(b) State the name of

(i) the enzyme secreted by the pancreas that digests fat

.....[1]

(ii) the products of chemical digestion of fat

.....[1]

(iii) the liquid that is produced by the liver and stored by organ **P** in Fig. 1.1

.....[1]

(iv) organ **P** in Fig. 1.1.

.....[1]

(c) Explain what happens to ingested fat at **R** in Fig. 1.1 **before** chemical digestion occurs.

.....
.....
.....
.....
.....
.....[2]

(d) Explain how the products of fat digestion are transported from **Q** to the rest of the body.

.....
.....
.....
.....
.....
.....
.....
.....[3]

2 The genes for antibodies are only active in lymphocytes.

(a) Define the term *gene*.

.....
.....
..... [2]

(b) Lymphocytes produce antibodies.

Outline the role of antibodies in the defence of the body against pathogens.

.....
.....
.....
.....
.....
.....
.....
.....
.....
.....
..... [4]

- (c) Fig. 2.1 is a drawing made from an electron micrograph of a lymphocyte that produces antibodies.

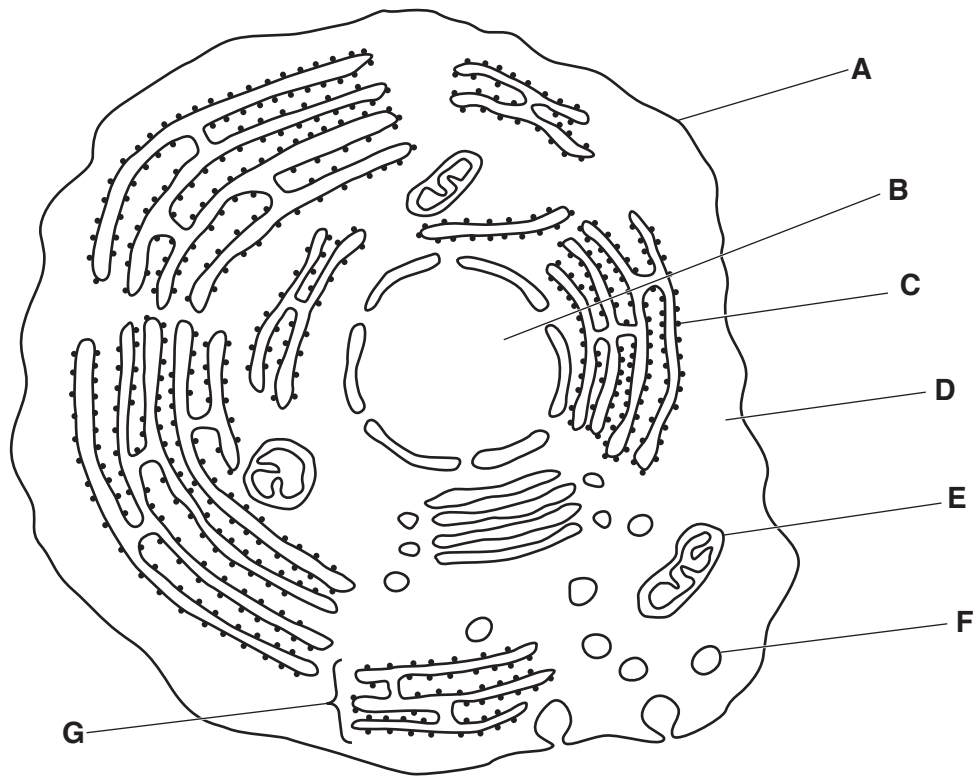


Fig. 2.1

Table 2.1 contains statements about the structures visible in Fig. 2.1.

Complete Table 2.1 by

- naming the structure
- identifying the letter that labels the structure.

The first one has been done for you.

Table 2.1

| function | name of structure | letter from Fig. 2.1 |
|--|-------------------|----------------------|
| absorption of amino acids used in making antibodies | cell membrane | A |
| stores genetic information as DNA | | |
| provides energy for making antibodies | | |
| site of production of antibodies | | |
| transport of antibody molecules for release into blood | | |

[4]

(d) State the name of **one** type of cell, other than a lymphocyte, that is involved in the defence of the body against pathogens and describe its role.

name.....

role.....

.....

[2]

[Total: 12]

3 Heroin is a drug that acts on the nervous system.

(a) Define the term *drug*.

.....

.....

.....

.....[2]

There are pain receptors in the skin. These receptors transmit impulses along sensory neurones to the spinal cord.

Fig. 3.1 shows the synapses between sensory neurone **A** and a relay neurone and sensory neurone **B** and a relay neurone, in the spinal cord.

Fig. 3.2 is an enlarged view of the synapse between sensory neurone **A** and the relay neurone, as indicated by the circle on Fig. 3.1.

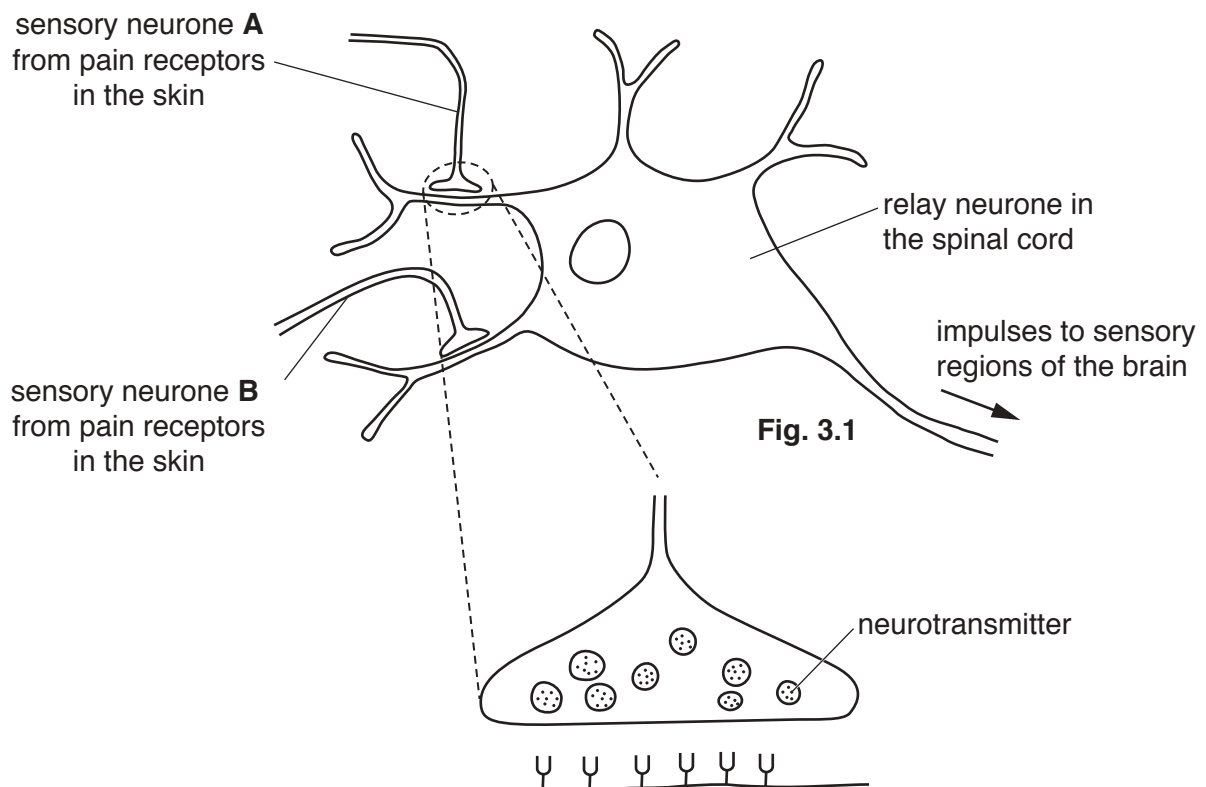


Fig. 3.2

(e) List **three** stimuli, other than pain, which humans can detect.

1.....

2.....

3.....

[3]

[Total: 14]

4 Fig. 4.1 shows part of the circulatory system of a fish.

The arrows show the direction of blood flow.

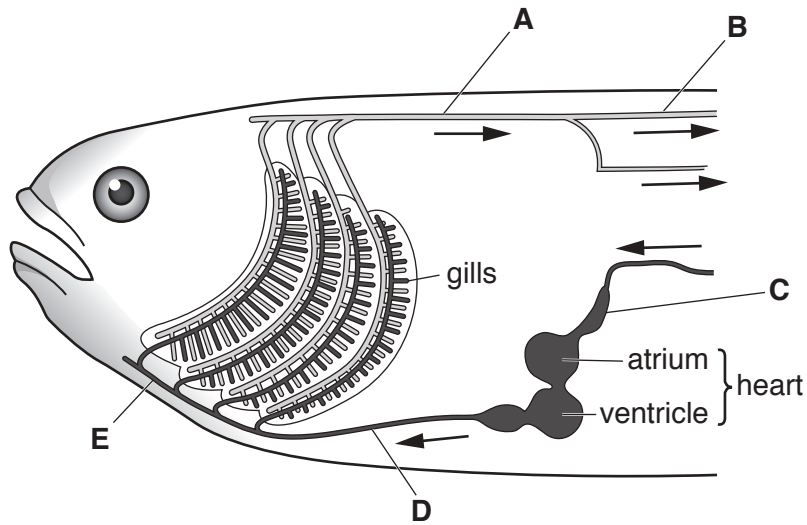


Fig. 4.1

(a) The circulatory system of fish is described as a single circulation.

State what is meant by a *single circulation*.

.....
 [1]

(b) State the letter of the blood vessel in Fig. 4.1 that contains blood at the highest pressure.

..... [1]

(c) The gills are the site of gas exchange.

State **two** features of gas exchange surfaces.

1.....

 2.....
 [2]

[Total: 4]

5 The giant quiver tree, *Aloe pillansii*, shown in Fig. 5.1, is an endangered species.

These long-lived trees grow in harsh environments. Some populations of *A. pillansii* are found within the Richtersveld National Park, but one population is found just outside on a mountain called Cornell's Kop in southern Africa.



Fig. 5.1

(a) (i) State the genus of the giant quiver tree.

.....[1]

(ii) Explain why the *A. pillansii* trees on Cornell's Kop represent a population.

.....
.....
.....
.....
.....[3]

(b) Suggest **three** reasons why the giant quiver tree is an endangered species.

1.....
.....
2.....
.....
3.....
.....

[3]

- 6 Students investigated the effect of mineral ion deficiencies on the growth of radish plants.

The seeds that were used in the experiment were from plants that had been self-pollinated for many generations and were therefore all genetically identical.

- (a) Explain the advantage of using genetically identical radishes in this investigation.

.....

.....

.....

.....[2]

The radish seedlings were divided into four groups. Each group was grown in a different mineral ion solution as follows:

- 1 complete solution containing all the major mineral ions
- 2 solution with all the major mineral ions except **nitrate ions**
- 3 solution with all the major mineral ions except **magnesium ions**
- 4 solution with all the major mineral ions except **phosphate ions**

The apparatus used to investigate the growth of the plants is shown in Fig. 6.1.

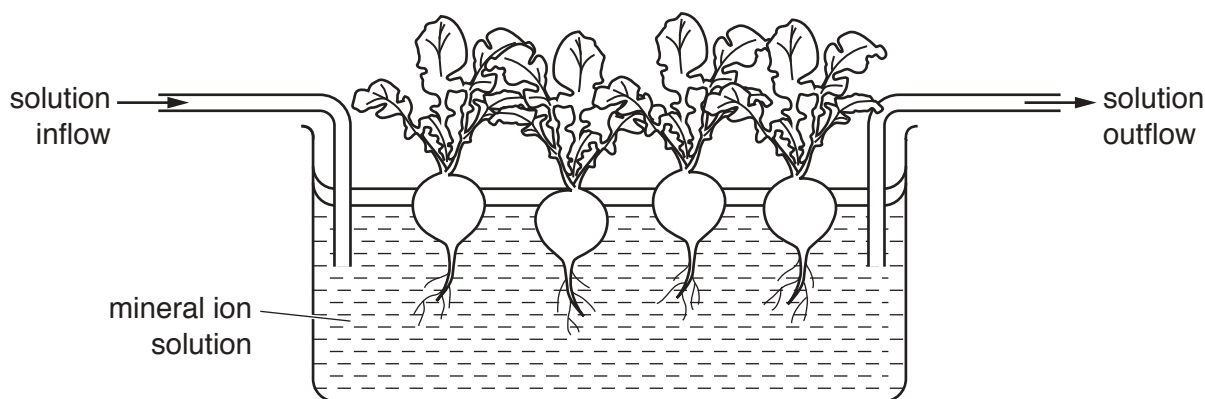


Fig. 6.1

(d) Describe the likely appearance of the radish plants grown in the solution without magnesium ions (group 3) and explain your answer.

appearance.....

.....

explanation.....

.....

.....

[3]

(e) Phosphate ions are a component of DNA.

Suggest why the radish plants in group 4 grew less than the radish plants in the complete solution (group 1).

.....

.....

.....

.....

..... [2]

[Total: 14]

BLANK PAGE

Permission to reproduce items where third-party owned material protected by copyright is included has been sought and cleared where possible. Every reasonable effort has been made by the publisher (UCLES) to trace copyright holders, but if any items requiring clearance have unwittingly been included, the publisher will be pleased to make amends at the earliest possible opportunity.

To avoid the issue of disclosure of answer-related information to candidates, all copyright acknowledgements are reproduced online in the Cambridge International Examinations Copyright Acknowledgements Booklet. This is produced for each series of examinations and is freely available to download at www.cie.org.uk after the live examination series.

Cambridge International Examinations is part of the Cambridge Assessment Group. Cambridge Assessment is the brand name of University of Cambridge Local Examinations Syndicate (UCLES), which is itself a department of the University of Cambridge.